

S-37-09

MILITARY STANDARD

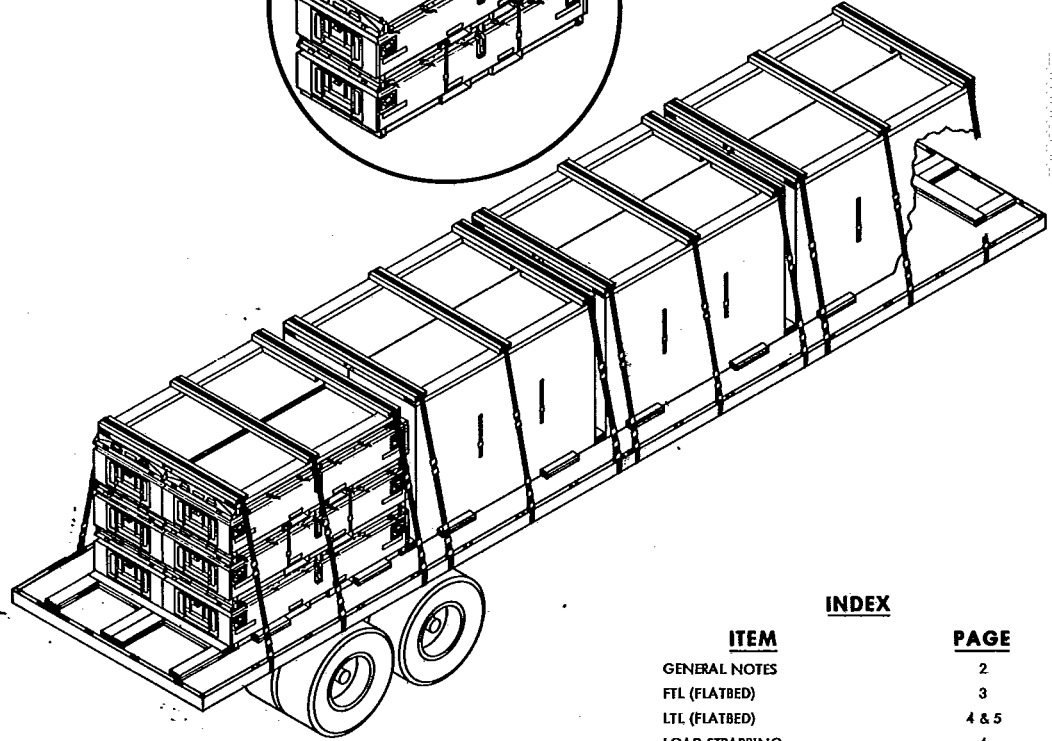
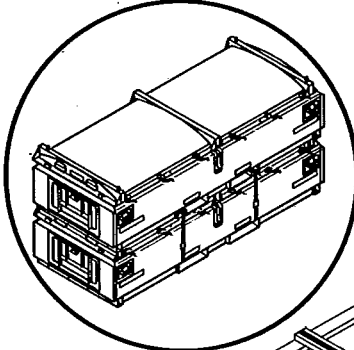
**MIL-STD-1320-171
(NAVY)**

25 MARCH 1976

**TRUCKLOADING
DISPENSER AND BOMB AIRCRAFT
CBU-MK20 & MODS (ROCKEYE II) OR
CBU-55/B, CBU-55A/B OR CBU-72/B (FAE) OR
CBU-59/B (APAM)
IN CONTAINER, CNU-238/E
FLEET ISSUE UNIT LOAD**

UNIT LOAD DATA

UNIT LOAD DRAWINGS SEE GENERAL NOTE 1
DIMENSIONS 104LX38WX53H
WEIGHT SEE TABLE I
CUBE 121.2 CU. FT.
DOT HAZARD CLASSIFICATION EXPLOSIVES A



INDEX

ITEM	PAGE
GENERAL NOTES	2
FTL (FLATBED)	3
LTL (FLATBED)	4 & 5
LOAD STRAPPING	4
STRAPPING & STACKING	6
FTL & LTL (VANS)	6, 7 & 8

- NOTES:
1. UNLESS OTHERWISE SPECIFIED DIMENSIONS ARE IN INCHES.
 2. FOR CROSS REFERENCE TO ASSOCIATED PALLETIZING, CONTAINERLOADING AND CARLOADING MILITARY STANDARDS. REFER TO INDEX TO STANDARDS, MIL-HDBK-236. (NAVY).

FSC 8140

**AUTHORIZED AND RELEASED
FOR HIGHWAY SHIPMENTS
ONLY**

M.S. Gray NWHL 3/19/76
SIGNATURE TECHNICAL DIRECTION AGENT (TDA) DATE

J.E. Kelly 3/19/76
SIGNATURE AIRSYSCOM, BY DIRECTION DATE

ORIGINATOR *Charles M. ...* 3/19/76
SIGNATURE

**NAVAL WEAPONS HANDLING LABORATORY
WPNSA EARLE, NEW JERSEY**

MIL-STD-1320-171 (NAVY)

GENERAL NOTES

1. THIS DOCUMENT PROVIDES DETAILED INSTRUCTIONS FOR TRUCKLOADING THE FLEET ISSUE UNIT LOADS OF DISPENSER AND BOMB, AIRCRAFT:
 - A. CBU-MK 20 & MODS (ROCKEYE II) UNITIZED WR-54/268
 - B. CBU-55/B, 55A/B AND 72/B (FAE) UNITIZED WR-54/269
 - C. CBU-59/B (APAM) UNITIZED PER WR-54/270
2. THE PROCEDURES DESCRIBED HEREIN ARE INTENDED FOR 40 FT. FLATBED TRAILERS AND 40, 42 & 44 FT VANS WITH WOOD FLOORS OR METAL FLOORS WITH WOOD NAILING STRIPS. THE TRAILERS SHALL HAVE THEIR TANDEM AXLES LOCATED IN THE "WESTERN" POSITION (AT THE EXTREME REAR OF THE TRAILER). DO NOT USE TRAILERS WITH ALL METAL FLOORS.
3. SWAY BRACE, DETAIL G, IS ASSEMBLED IN PLACE. PIECES 6 ARE POSITIONED IN THE CONTAINER FORK POCKET, WITH PIECES 7 AGAINST THE CONTAINER, NAIL TO PIECE 6 WITH THREE 12D NAILS PER JOINT. CUT PIECE 8 TO FIT BETWEEN PIECES 7 AND NAIL TO PIECE 6 WITH THREE 12D NAILS.
4. WHEN REQUIRED BY THIS STANDARD, ONE ADDITIONAL CONTAINER IS STRAPPED TO THE FLEET ISSUE UNIT LOAD AS DESCRIBED ON PAGE 6.

NOTE

WHEN THE TRUCK TRANSPORTATION CYCLE IS COMPLETED, THE TOP CONTAINER IS REMOVED BY CUTTING THE TOP STRAPPING. THE LOOSE CONTAINERS SHALL BE UNITIZED PER THE APPROPRIATE DOCUMENT (SEE NOTE 1 ABOVE) FORMING A FLEET ISSUE UNIT LOAD.

5. STACKS OF CONTAINERS TWO HIGH REQUIRE TWO TIE DOWNS PER STACK WHILE STACKS THREE HIGH REQUIRED THREE TIE DOWNS PER STACK.
6. CHAINS AND STEEL STRAPS MAY BE USED INTERCHANGEABLY FOR TIE-DOWNS ON A 1 TO 1 BASIS.
7. STEEL STRAPS SHALL BE 2 X .050 AND APPLIED AS SPECIFIED BY THE LOAD STRAPPING REQUIREMENTS SHOWN ON PAGE 4.
8. A CONTAINER PROTECTOR (DETAIL A PAGE 3 OR DETAIL D PAGE 5) SHALL BE USED BETWEEN THE TIE-DOWNS (CHAIN OR STRAP) AND THE CONTAINERS TO PREVENT CONTAINER DAMAGE. ASSEMBLE PROTECTOR IN PLACE CUTTING THE LENGTH OF THE CROSS PIECE TO SUIT. THE CENTER CROSS PIECE IN DETAIL D IS REQUIRED WHEN THREE TIE-DOWNS ARE USED.
9. CHAINS AND LOAD BINDERS SHALL MEET THE FOLLOWING CONDITIONS:
 - A. CHAINS AND FITTINGS SHALL BE 3/8 INCH AND LOADBINDERS 3/8 INCH CAPACITY.
 - B. CHAINS, FITTINGS AND LOADBINDERS SHALL HAVE A MINIMUM SAFE WORKING LOAD OF 5000 LBS.
 - C. LOADBINDERS SHALL BE SAFETY WIRED WITH 16 GAUGE SOFT ANNEALED IRON WIRE OR SECURED USING THE END PIECE OF THE 3/8 CHAIN.
10. PRIOR TO LOADING THE TRAILER AND DURING THE PRELOADING INSPECTION REQUIRED BY OP2165 AND REPORTED ON DD FORM 626, THE CHAINS, FITTINGS AND LOADBINDERS SHALL BE INSPECTED FOR STRETCH, GOUGING, BENT LINKS, WEAR AND ANY OTHER NOTICEABLE DEFECTS. THE INSPECTOR SHALL CONFIRM THAT THE CHAINS AND LOADBINDERS HAVE BEEN INSPECTED AND SHALL SO NOTE IN ITEM NO. 22 OF DD FORM 626. ANY DEFICIENCY SHALL BE CAUSE FOR REJECTION OF A CHAIN OR LOADBINDER.
11. THE MAXIMUM GROSS WEIGHT OF THE TRACTOR-TRAILER AND THE ALLOWABLE AXLE WEIGHTS ARE THE RESPONSIBILITY OF THE CARRIER. THE CARRIER WILL ADVISE THE SHIPPER OF THESE LIMITATIONS AND THE SHIPPER SHALL LOAD THE TRAILER IN SUCH A MANNER THAT THE TRACTOR-TRAILER WILL NOT EXCEED THESE LIMITATIONS.
12. AFTER BLOCKING AND BRACING HAS BEEN INSPECTED, ATTACH SHIPPING DOCUMENTS TO TRAILER IN AN ACCESSIBLE AREA AND ATTACH "EXPLOSIVE A" PLACARD TO BOTH SIDES, FRONT AND BACK OF TRAILER.
13. APPLICABLE MATERIAL SPECIFICATIONS: DUNNAGE LUMBER, MM-L-751; NAILS, FF-N-105, TYPE II STYLE 10, COMMON BRIGHT; STRAPPING, QQ-S-781, TYPE I CLASS A.
14. FOR GENERAL TRUCKLOADING PROCEDURES REFER TO THE GENERAL TRUCKLOADING DOCUMENT, MIL-STD-1320 (NAVY).

FTL 40 FT. TRAILERS (FLATBED)

1. A FTL CONSISTS OF 12 UNIT LOADS (24 CONTAINERS) OF FAE OR ROCKEYE II AS SHOWN ON PAGE 3 OR 10 UNIT LOADS (20 CONTAINERS) OF APAM LOADED IN ACCORDANCE WITH THE 10 UNIT LOAD PATTERN ON PAGE 4.

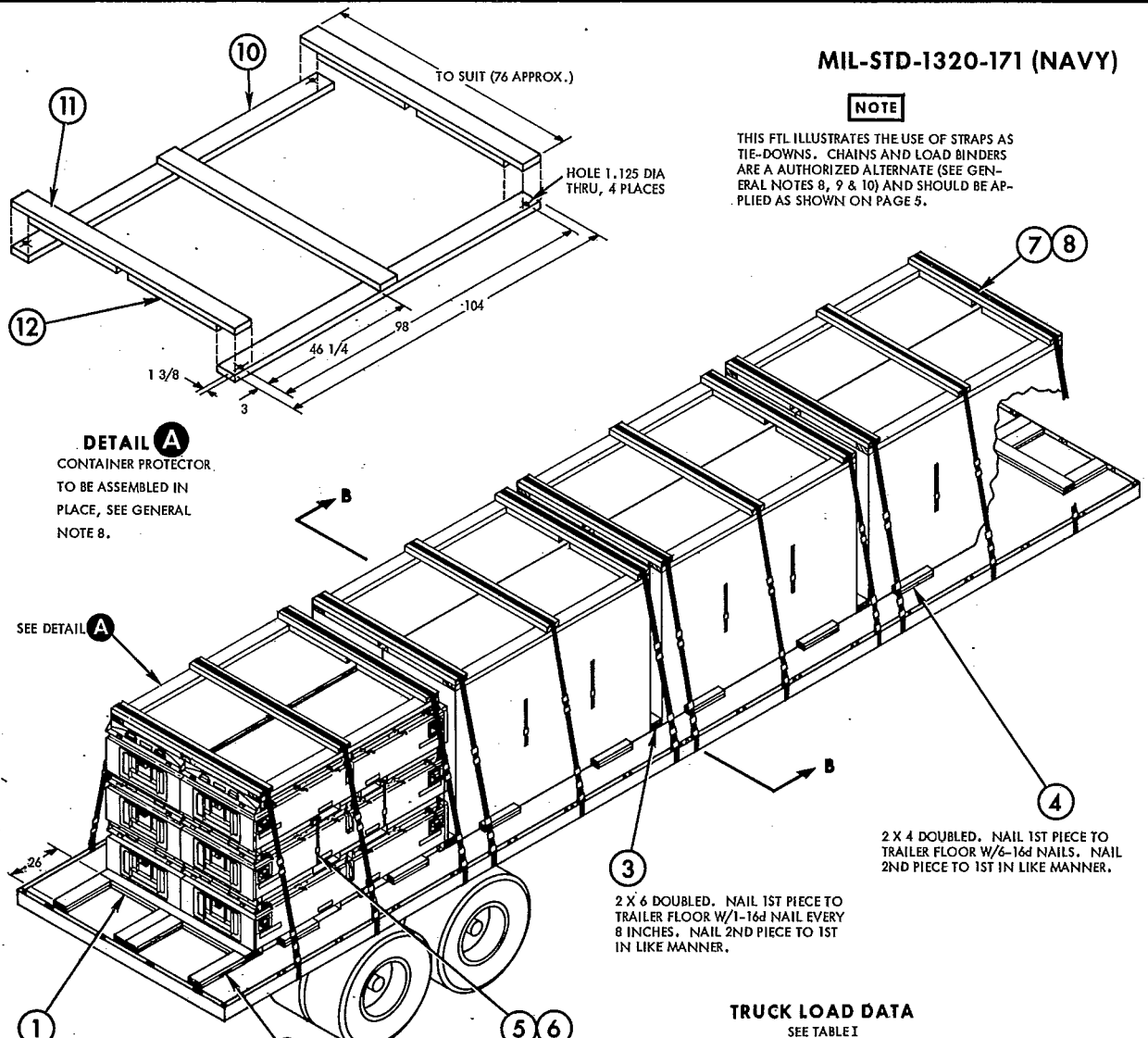
TABLE I
FTL DATA (FLATBED)

ITEM	NUMBER OF UNIT LOADS	UNIT LOAD WEIGHT (LBS) APPROX.	TRUCKLOAD WEIGHT (LBS) APPROX.
CBU-59/B (APAM)	10	4325	43,250
CBU-55/B, 55 A/B OR 72/B (FAE)	12	3405	40,860
CBU-MK 20 & MODS (ROCKEYE II)	12	3325	39,900

MIL-STD-1320-171 (NAVY)

NOTE

THIS FTL ILLUSTRATES THE USE OF STRAPS AS TIE-DOWNS. CHAINS AND LOAD BINDERS ARE A AUTHORIZED ALTERNATE (SEE GENERAL NOTES 8, 9 & 10) AND SHOULD BE APPLIED AS SHOWN ON PAGE 5.



DETAIL A
CONTAINER PROTECTOR.
TO BE ASSEMBLED IN
PLACE, SEE GENERAL
NOTE 8.

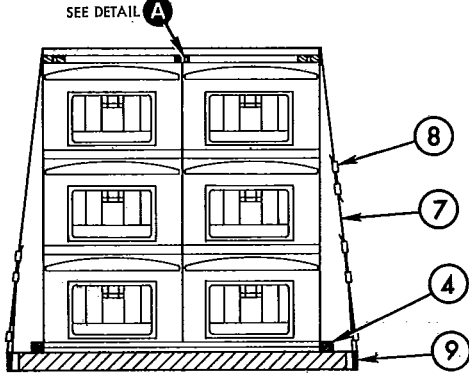
SEE DETAIL A

1
2 X 6 DOUBLED. NAIL 1ST PIECE TO TRAILER FLOOR W/1-16d NAIL EVERY 8 INCHES. NAIL 2ND PIECE TO 1ST IN LIKE MANNER.

2
2 X 6 DOUBLED. NAIL 1ST PIECE TO TRAILER FLOOR W/6-16d NAILS. NAIL 2ND PIECE TO 1ST IN LIKE MANNER.

3
2 X 6 DOUBLED. NAIL 1ST PIECE TO TRAILER FLOOR W/1-16d NAIL EVERY 8 INCHES. NAIL 2ND PIECE TO 1ST IN LIKE MANNER.

4
2 X 4 DOUBLED. NAIL 1ST PIECE TO TRAILER FLOOR W/6-16d NAILS. NAIL 2ND PIECE TO 1ST IN LIKE MANNER.



SECTION B-B

TRUCK LOAD DATA
SEE TABLE I

12	SPACER	2'X 6 X 30	16	11	3 PER JOINT	10d
11	CROSS PIECE	2 X 6 X 76 APPROX	12	10	3 PER JOINT	10d
10	LONGITUDINAL	2 X 6 X 104	8	SEE 11	-	-
9	STAKE POCKET PAD	2 X .050 X 18	24	-	-	-
8	SEAL	FOR 2" STRAP	96	-	-	-
7	HOLD-DOWN STRAP	2 X .050 X 19 FT	12	-	-	-
6	SEAL	FOR 1 1/4 STRAP	16	-	-	-
5	UNITIZING STRAP	1 1/4 X .035 X 12 FT	16	-	-	-
4	SLEEPER	2 X 4 X 18	32	SEE FIELD NOTE		
3	SPACER	2 X 6 X 76	6	SEE FIELD NOTE		
2	BACKUP CLEAT	2 X 6 X 20	16	SEE FIELD NOTE		
1	CROSSMEMBER	2 X 6 X 76	4	SEE FIELD NOTE		
PIECE NO.	DESCRIPTION	SIZE	NO. OF PIECES REQ'D	NAIL TO	NUMBER	SIZE
					NAILS	

LIST OF MATERIALS & NAILING DATA

40 FT FLATBED TRAILER WITH 12 UNIT LOADS