

MILITARY STANDARD

S-37-03
 MIL-STD-1320-210
 (NAVY)

TRUCKLOADING

8 OCTOBER 1982

WALLEYE I GUIDED WEAPON

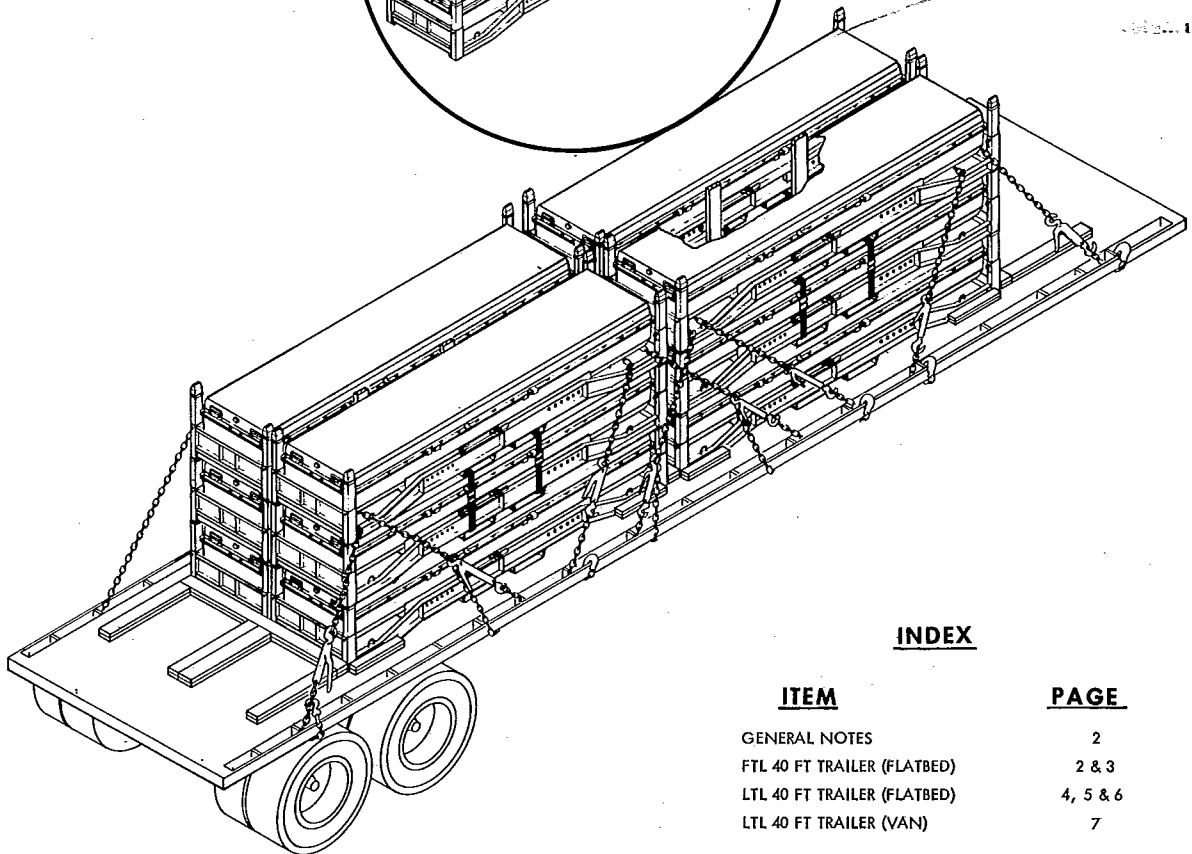
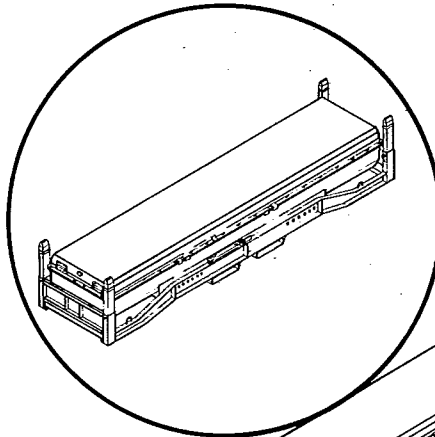
IN SHIPPING AND STORAGE CONTAINER CNU-356/E

CONTAINER DATA

DODIC/NALC E220 E219
 E218 E228

DIMENSIONS 160 L X 38 W X 31 3/4
 STACKING HEIGHT 27 5/8
 GROSS WEIGHT (APPROX) 3050 LBS Δ
 EMPTY WEIGHT (APPROX) 850 LBS
 CUBE 111.7 CU FT
 DOT HAZARD CLASSIFICATION ... EXPLOSIVES A

Δ DO NOT USE FOR SHIPPING PURPOSES



INDEX

ITEM	PAGE
GENERAL NOTES	2
FTL 40 FT TRAILER (FLATBED)	2 & 3
LTL 40 FT TRAILER (FLATBED)	4, 5 & 6
LTL 40 FT TRAILER (VAN)	7

NOTES:

- UNLESS OTHERWISE SPECIFIED DIMENSIONS ARE IN INCHES.
- FOR CROSS REFERENCE TO ASSOCIATED PALLETIZING, CONTAINER-LOADING AND CARLOADING MILITARY STANDARDS REFER TO INDEX TO STANDARDS, MIL-HDBK-236 (NAVY).

FSC 8140

**AUTHORIZED AND RELEASED
 FOR HIGHWAY SHIPMENTS
 ONLY.**

M. J. Gray *10/7/82*
 SIGNATURE TECHNICAL DIRECTION AGENT (TDA) DATE
E. Kelly *10/7/82*
 SIGNATURE AIRSYSCOM BY DIRECTION DATE

ORIGINATOR *Charles McBride* *10/7/82*
 NAVAL WEAPONS HANDLING CENTER DATE
 WPNSTA EARLE, NEW JERSEY

PAGE 1 OF 7

MIL-STD-1320-210 (NAVY)**GENERAL NOTES**

1. THIS DOCUMENT GIVES DETAILED INSTRUCTIONS FOR TRUCKLOADING THE WALLEYE GUIDED WEAPON IN CONTAINER, SHIPPING AND STORAGE CNU-356/E.
2. THE PROCEDURES AND PRACTICES DESCRIBED HEREIN ARE INTENDED FOR 40 FT FLATBED TRAILERS OR 40 FT VAN TRAILERS. THE TRAILER AXLES SHALL BE LOCATED IN THE WESTERN POSITION (AT THE EXTREME REAR OF THE TRAILER). DO NOT USE TRAILERS WITH NON-AVAILABLE FLOORS.
3. EACH STACK OF CONTAINERS TWO OR MORE HIGH IS SECURED TOGETHER WITH TWO 1 1/4 X .035 CROSS STRAPS. THESE STRAPS PASS THROUGH THE FORK POCKETS OF THE TOP CONTAINERS AND RETURN THROUGH THE FORK POCKETS OF THE CONTAINERS IMMEDIATELY BELOW THE TOP CONTAINER.
4. ONLY CHAINS AND LOAD BINDERS SHALL BE USED FOR TIEDOWNS. (STEEL STRAPS ARE NOT AUTHORIZED). CHAINS, FITTINGS AND LOAD BINDERS SHALL MEET THE REQUIREMENTS OF THE GENERAL TRUCKLOADING DOCUMENT MIL-STD-1320 AND BE APPLIED AS SHOWN IN THIS DOCUMENT, PAGES 3, 5 AND 7.

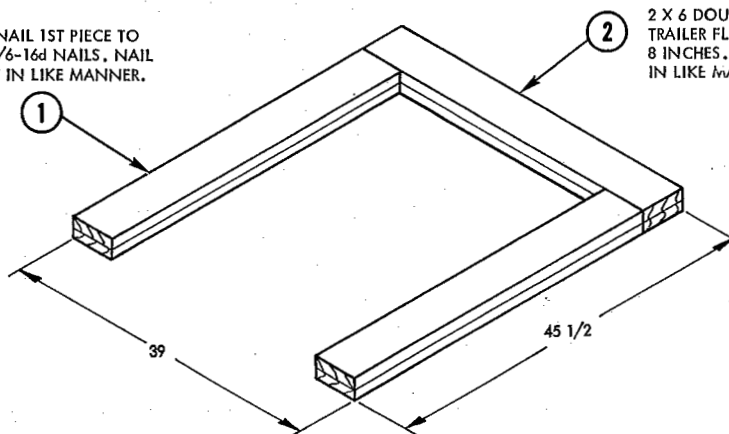
NOTE

CHAINS PASS UNDER CONTAINER POD
THROUGH THE STACK FROM ONE SIDE
OF THE TRAILER TO THE OTHER.

5. PRIOR TO LOADING THE TRAILER AND DURING THE PRELOADING INSPECTION REQUIRED BY NAVWEPS OP 2165 AND REPORTED ON DD FORM 626, THE CHAINS, FITTINGS AND LOAD BINDERS SHALL BE INSPECTED FOR STRETCH, GOUGING, BENT LINKS, WEAR AND ANY OTHER NOTICEABLE DEFECTS. THE INSPECTOR SHALL CONFIRM THAT THE CHAINS AND LOAD BINDERS HAVE BEEN INSPECTED AND SHALL SO NOTE IN ITEM NO. 22 OF DD FORM 626, ANY DEFICIENCY SHALL BE CAUSE FOR REJECTION OF A CHAIN OR LOAD BINDER.
6. THE MAXIMUM GROSS WEIGHT OF THE TRACTOR-TRAILER AND THE ALLOWABLE AXLE WEIGHTS ARE THE RESPONSIBILITY OF THE CARRIER. THE CARRIER WILL ADVISE THE SHIPPER OF THESE LIMITATIONS AND THE SHIPPER SHALL LOAD THE TRAILER IN SUCH A MANNER THAT THE TRACTOR-TRAILER WILL NOT EXCEED THESE LIMITATIONS.
7. AFTER BLOCKING AND BRACING HAS BEEN INSPECTED, ATTACH SHIPPING DOCUMENTS TO AN ACCESSIBLE AREA AND ATTACH "EXPLOSIVES A" PLACARD TO BOTH SIDES, FRONT AND BACK OF TRAILER.
8. UNLESS OTHERWISE SPECIFIED MATERIALS SHALL BE IN ACCORDANCE WITH THE GENERAL TRUCKLOADING DOCUMENT, MIL-STD-1320.
9. FOR GENERAL TRUCKLOADING PROCEDURES REFER TO THE GENERAL TRUCKLOADING DOCUMENT MIL-STD-1320.

FTL 40 FT TRAILER (FLATBED)

① 2 X 6 DOUBLED. NAIL 1ST PIECE TO TRAILER FLOOR W/6-16d NAILS, NAIL 2ND PIECE TO 1ST IN LIKE MANNER.

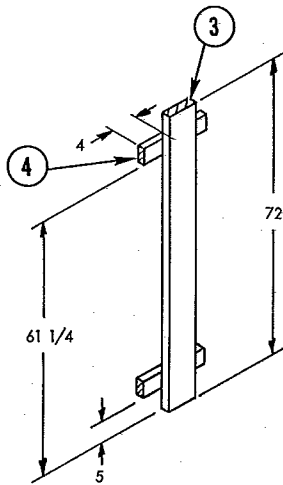


② 2 X 6 DOUBLED. NAIL 1ST PIECE TO TRAILER FLOOR W/1-16d NAIL EVERY 8 INCHES. NAIL 2ND PIECE TO 1ST IN LIKE MANNER.

DETAIL A

END BLOCKING
(4 REQUIRED)

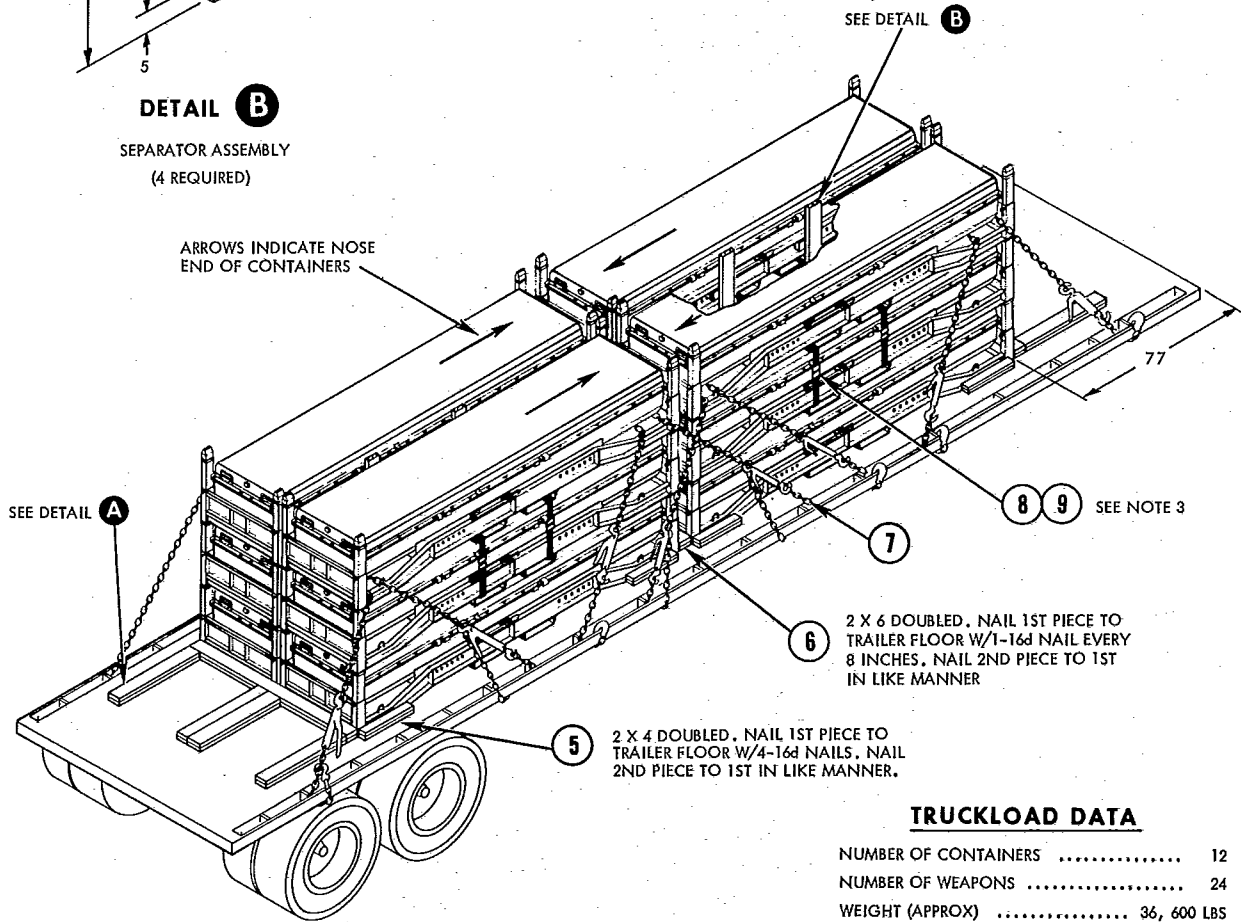
MIL-STD-1320-210 (NAVY)



DETAIL B

SEPARATOR ASSEMBLY
(4 REQUIRED)

ARROWS INDICATE NOSE
END OF CONTAINERS



2 X 6 DOUBLED. NAIL 1ST PIECE TO TRAILER FLOOR W/1-16d NAIL EVERY 8 INCHES. NAIL 2ND PIECE TO 1ST IN LIKE MANNER

2 X 4 DOUBLED. NAIL 1ST PIECE TO TRAILER FLOOR W/4-16d NAILS. NAIL 2ND PIECE TO 1ST IN LIKE MANNER.

TRUCKLOAD DATA

NUMBER OF CONTAINERS 12
 NUMBER OF WEAPONS 24
 WEIGHT (APPROX) 36, 600 LBS

9	SEAL	FOR 1 T/4 STRAP	8	SEE GENERAL NOTE 3
8	CROSS STRAP	1 1/4 X .035 X 17 FT	4	SEE GENERAL NOTE 3
7	CHAIN & LOAD BINDER	5/16 OR 3/8	8	SEE GENERAL NOTE 4
6	CENTER CROSSMEMBER	2 X 6 X 78	2	SEE FIELD NOTE
5	SLEEPER	2 X 4 X 24	16	SEE FIELD NOTE
4	CROSS PIECE	2 X 4 X 14	8	SEE DETAIL B
3	UPRIGHT	2 X 6 X 72	4	SEE DETAIL B
2	BACKUP CLEAT	2 X 6 X 40	16	SEE DETAIL A
1	CROSSMEMBER	2 X 6 X 39	8	SEE DETAIL A
PIECE NO.	DESCRIPTION	SIZE	NO. PCS. REQ'D	MAT'L/DWG

LIST OF MATERIALS AND NAILING DATA